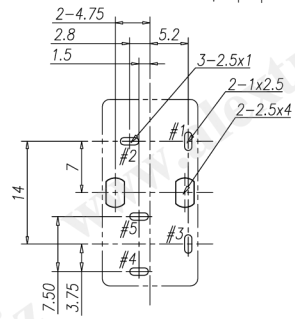
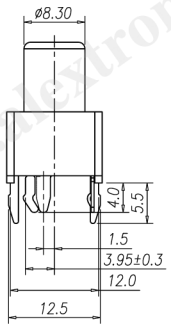
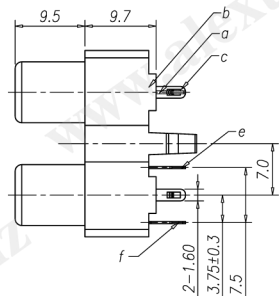
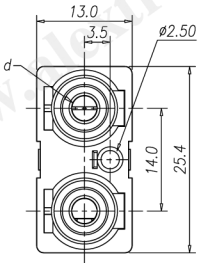


CATEGORY	DESCRIPTION	P/N #
CONNECTOR	RCA Jack, 1*2 Ports, V/A, T/H, Without Shielding, With Switch, Top Screw Hole*1	RJ065V-12050-XXB0

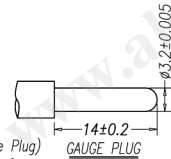
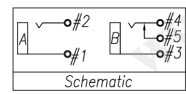
RJ065V-12050-XXB0

See Color Scheme

REV.	ECN NO	DESCRIPTION	REVISED	DATE
A01		New Release	Luguan	2009.09.29



Recommend PCB Layout  
(Jack Top View)  
Tolerance: ±0.05mm  
Recommend PCB Thickness: 1.6mm



SPECIFICATION

- Voltage and Current Rating: 12V & 1A
- Contact resistance: 30mΩ MAX.
- Insulation resistance: 100MΩ MIN. @ DC500V
- Withstand voltage: 500VAC for 1min
- Insertion Force: 3Kgf MAX.
- Extraction Force: 0.3Kgf MIN.
- Withdraw Force for Center Contact: 0.08Kgf MIN.  
(Use a OD=3.2±0.005mm, Length=14±0.2mm Gauge Plug)
- Terminal Strength: The terminal shall be capable of withstanding a force of 3Kgf applied in any direction for 0.5 secs without losing and breakdown
- Life test: 1,500 cycles
- Temperature Range: -25°C~70°C
- To conform with the "QC-03-045" & "RoHS DIRECTIVE"
- Solder heat resistance: wave soldering 260°C 5 secs



XX	Housing	A	B
11	Black	White	Red

Product Drawing  
ALEXTRONIC

NO.	PART NAME	Q'TY	MATERIAL	PLATING & COLOR	Remark
f	Terminal#4	1	Phosphor Bronze, T=0.3mm	Ag Plating	
e	Terminal#5	1	Brass, T=0.3mm	Ag Plating	
d	Washer	2	PBT UL94V-0	See Color Scheme	
c	Terminal#1,3	2	Brass, T=0.4mm	CuSn Plating	
b	Housing	1	PBT UL94V-0	See Color Scheme	
a	Terminal#2	1	Brass, T=0.4mm	CuSn Plating	

UNLESS OTHERWISE SPECIFIED TOLERANCES

DECIMALS: X : ±0.5 X.X : ±2 X.XX : ±0.3 X.XX : ±1 X.XX : ±0.2

ANGLES: X : ±2' X.X : ±1'

SCALE: 1/1	UNIT: mm	DWG.NO:
SIZE: A3	PAGE: 1 OF 1	REV: A01
APPROVED BY	CHECKED BY	PREPARED BY
WYX	Pengjie	Luguan
CUSTOMER COPY		